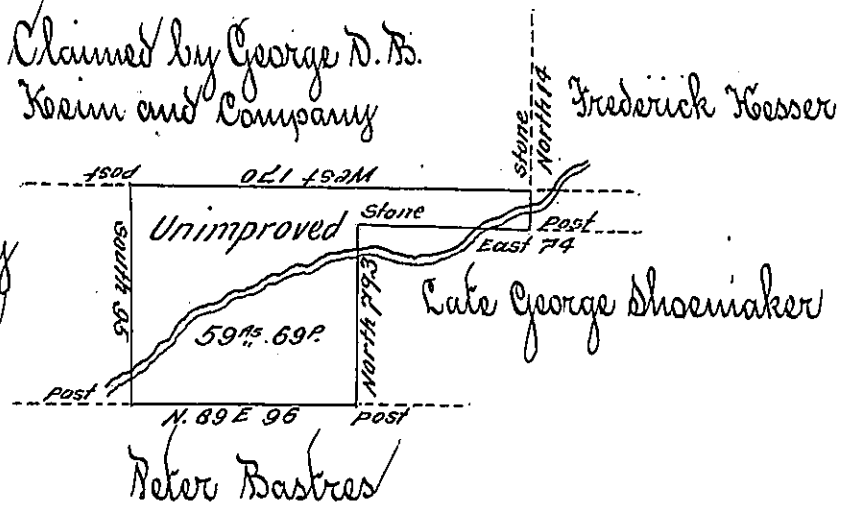


Surveyed this day
on Mt. to Benj. Becker



Situate in Schuylkill township Schuylkill county containing fifty nine acres
and sixty nine perches and the allowance of six per cent surveyed on the 22^d day of
September 1850 in pursuance of a warrant dated the 5th day of April 1850 granted
Benjamin Becker.

To Jacob Spangler Esquire }
Surveyor General of Penna. }

F. W. Jackson D. D.

The above land is claimed by George D. B. Keim Jacob W. Seitzinger and the heirs
of Samuel Methcill deceased by virtue of a warrant dated August 19th 1794 granted to
Henry Shiell

F. W. Jackson D. D.

IN TESTIMONY that the above is a copy of the original remaining on file in
the Department of Internal Affairs of Pennsylvania, made
conformably to an Act of Assembly approved the 16th day of
February, 1833, I have hereunto set my Hand and caused
the Seal of said Department to be affixed at Harrisburg,
this fifteenth day of April 1904.

Loac P. Brown
Secretary of Internal Affairs.